

THE FIRST
EMPEROR OF CHINA
THE GREATEST ARCHEOLOGICAL FIND
OF OUR TIME.

ARTHUR COTTERELL



THE FIRST EMPEROR OF CHINA

COTTERELL



THE FIRST EMPEROR OF CHINA

THE GREATEST ARCHEOLOGICAL FIND
OF OUR TIME

ARTHUR COTTERELL





THE FIRST EMPEROR OF CHINA

COTTERELL



Holt
Rinehart
Winston

THE FIRST EMPEROR OF CHINA

THE GREATEST ARCHEOLOGICAL FIND
OF OUR TIME

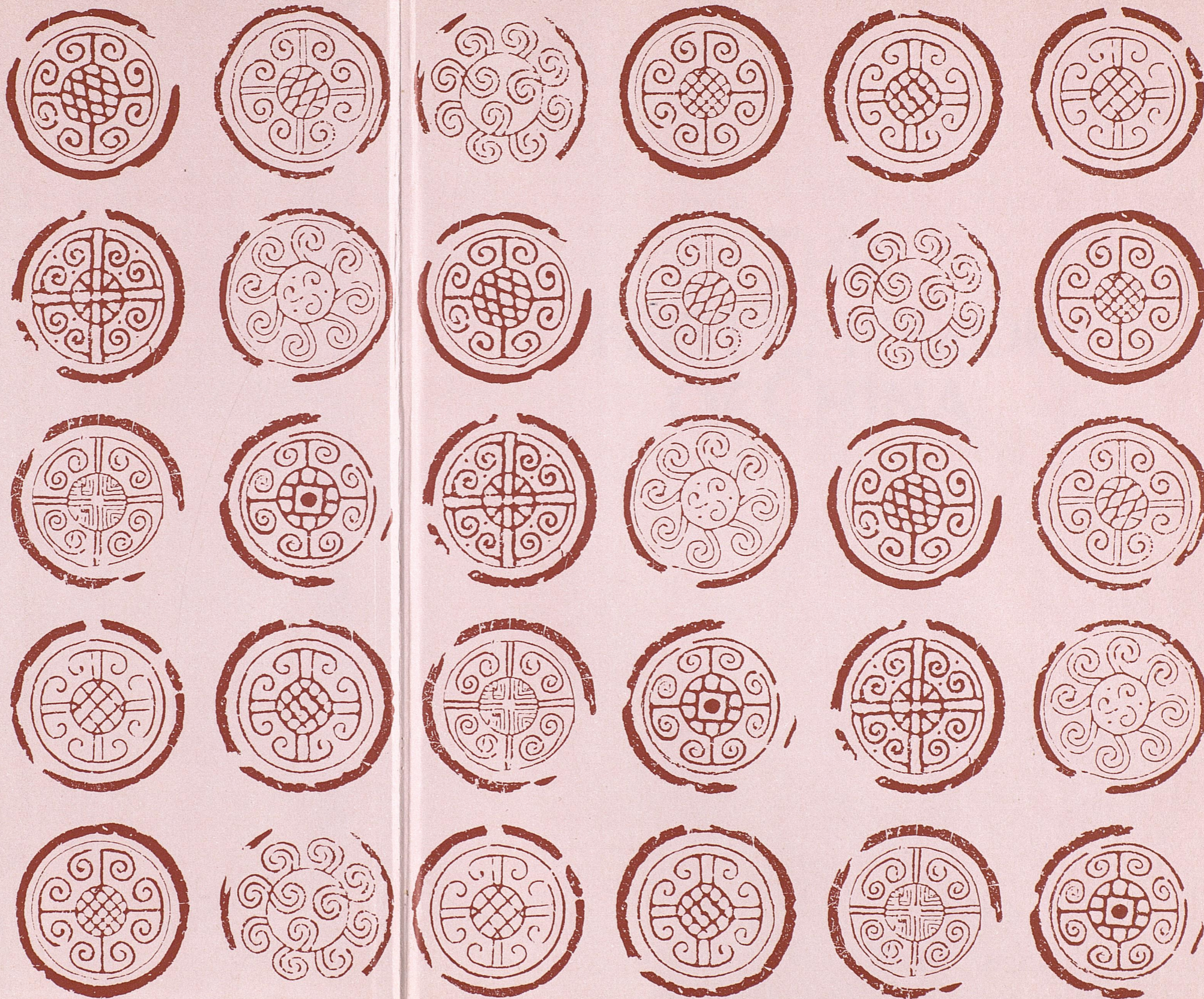
ARTHUR COTTERELL



The most spectacular excavation of modern archeology, the discovery of the tomb of the first Emperor of China, aroused an excitement that even exceeded the extraordinary sensation caused by Tutankhamun. The site on Mount Li in the northern province of Shensi was unearthed in 1974, revealing rows upon rows of over 7,000 life-size terracotta infantry, crossbowmen, chariots and cavalry, an army guarding the First Emperor's tomb in strict battle formation.

The history of the First Emperor is no less amazing: when Ch'in Shih-huang-ti unified China, he transformed it from a backward feudal state into a powerful kingdom with a centralized government that lasted from 221 BC to 1912 AD with only minor interruptions. Ch'in's impact on East Asian history was tremendous, and his reforms in China included standardization of the ancient laws, of currency, roads, measurements, and the written language. Historians agree that there is no more enigmatic, compelling or controversial figure in Chinese history than Ch'in, the Burner of the Books, the Builder of the Great Wall.

The discovery of the First Emperor's tomb spurred a major reinterpretation of the Ch'in empire. Arthur Cotterell was an official guest of the People's Republic of China when he visited the pits at Mount Li and the ruins of the Ch'in imperial capital at nearby Hsienyang. He discussed the new evidence and investigated the latest conclusions of expert historians and archeologists. This book is the fruit of his trip and his study. Through text, photographs and drawings, it details in full the splendors of the tomb and the surrounding pits, shown in several ground plans and cross-sectional views: the artefacts and the pottery figures themselves, their faces, their uniforms and their weapons. This magnificently illustrated book dramatically presents a major turning point in Chinese history.



秦 始 皇 帝



THE FIRST EMPEROR OF CHINA

The Greatest Archeological Find of Our Time

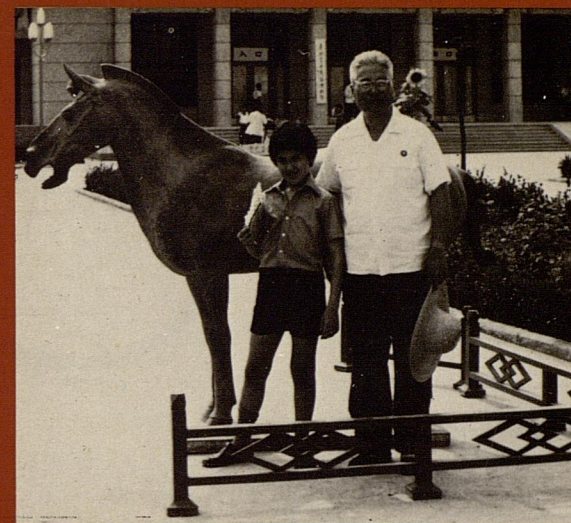
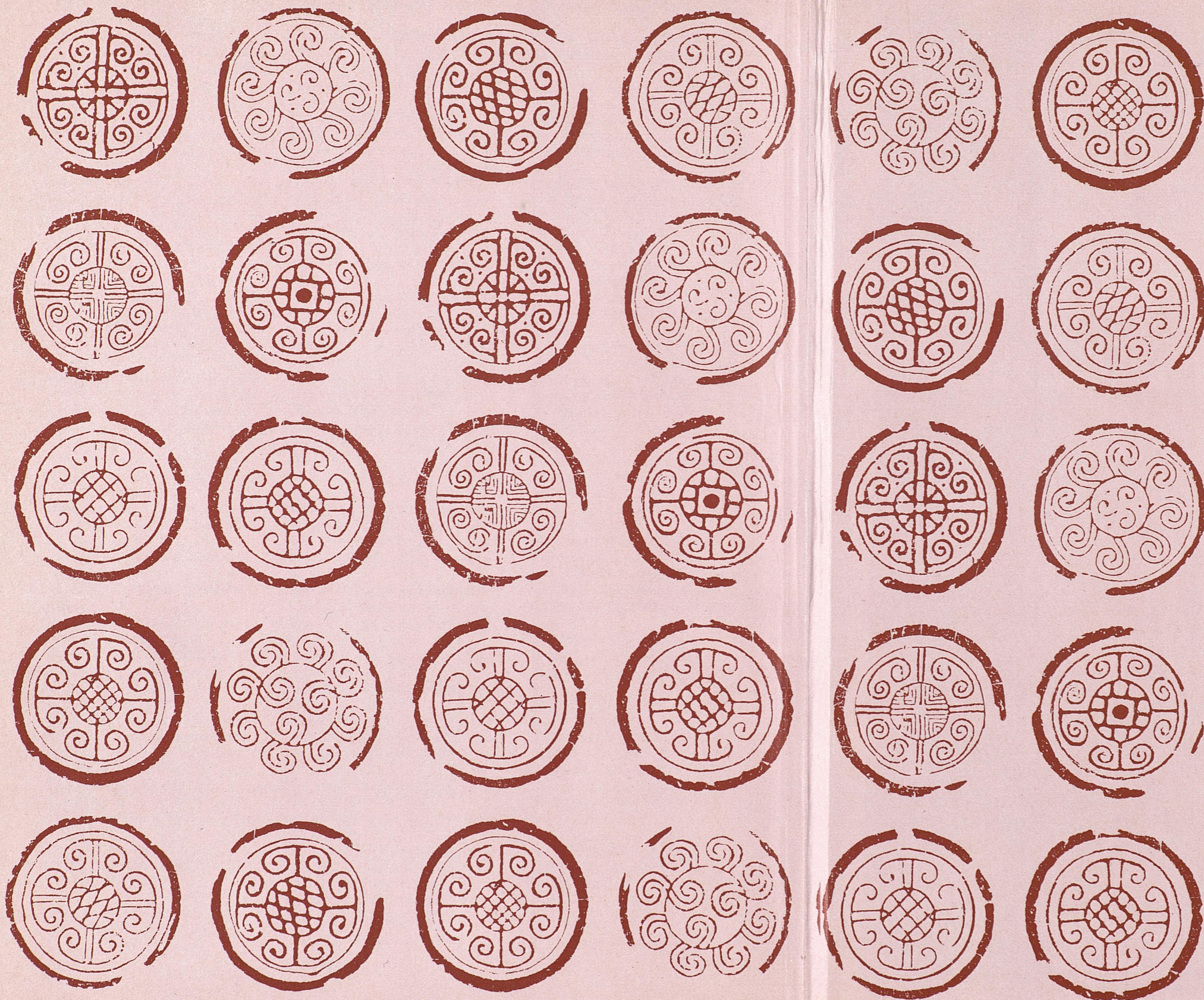
ARTHUR COTTERELL

*Introduction by
Mr Yang Chen Ching
Curator of the Museum of Warrior and Horse Figures
from the tomb of Ch'in Shih-huang-ti*

HOLT, RINEHART AND WINSTON
NEW YORK

CONTENTS

	Preface	7
	Introduction by <i>Mr Yang Chen Ching</i> <i>Curator of the Museum of Warrior and Horse Figures</i> <i>from the tomb of Ch'in Shih-huang-ti</i>	9
PART ONE	The Archaeological Discoveries	
<i>Chapter One</i>	The Tomb of Ch'in Shih-huang-ti	16
<i>Chapter Two</i>	The Land within the Passes; Hsienyang and the Wei river valley	54
PART TWO	The Historical Context	
<i>Chapter Three</i>	Feudal Decline; the Ch'un Ch'iu period, 770-481 BC	84
<i>Chapter Four</i>	The Triumph of Ch'in; the Chan Kuo period, 481-221 BC	101
<i>Chapter Five</i>	An Age of Intellectual Turmoil	118
PART THREE	The Ch'in Empire	
<i>Chapter Six</i>	Ch'in Shih-huang-ti, the First Emperor of China	136
<i>Chapter Seven</i>	Li Ssu, Grand Councillor and Guiding Genius of Ch'in	158
<i>Chapter Eight</i>	The Fall of the Ch'in Dynasty	177
	<i>Chronologies</i>	195
	<i>Bibliography</i>	198
	<i>List of Maps and Plans</i>	202
	<i>Acknowledgments</i>	203
	<i>Permissions</i>	205
	<i>Index</i>	206



Arthur Cotterell is joint author with his wife, Yong Yap of an acclaimed two-volume history of China: *The Early Civilization of China*, published by Weidenfeld and Nicolson (London) and G. P. Putnam's Sons (New York) in 1975 and *Chinese Civilization from the Ming Revival to Chairman Mao*, published by Weidenfeld and Nicolson (London) and St Martin's Press (New York) in 1977. His most recent book, *The Encyclopedia of Ancient Civilizations*, was published in 1980 by Windward (London) and by Mayflower Books (New York).

This book, *The First Emperor of China*, reveals the author's long-term interest in China, enhanced by the exciting new archeological finds at Mount Li. The book was assisted by the Chinese authorities, who in July 1979 invited the Cotterell family to visit the excavations at Mount Li. Most of the translations from the Chinese texts in the book have been provided by Mrs Cotterell.

JACKET PHOTOS

Front The inside of Pit No. 1 showing the army of the First Emperor ranged in columns.

Back An unarmoured crossbowman from the vanguard of the first pit.

Back flap Mr Yang Chen Ching, Curator of the Museum of Warrior and Horse Figures from the Tomb of Ch'in Shih-huang-ti, standing outside Pit No. 1 with the author's son, Alan Cotterell.

Jacket design by Robert Reed
Holt, Rinehart and Winston
383 Madison Avenue
New York, New York 10017

PRINTED IN GREAT BRITAIN

0 03 059889 3