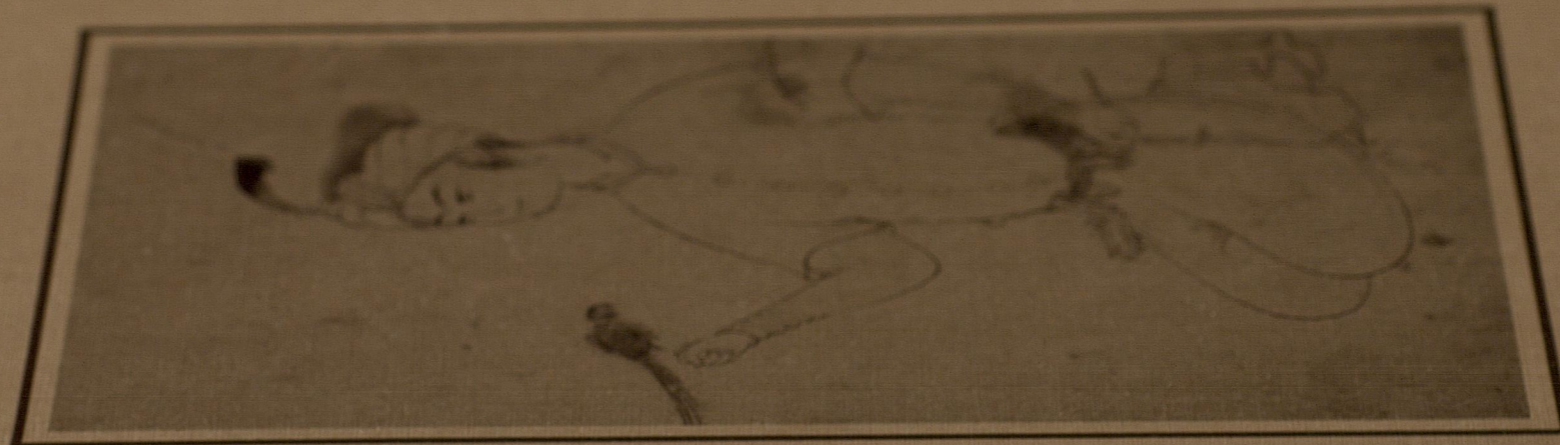


*The Brush of the Masters  
Drawings from Iran and India*



*Esin Attil*

*The Brush of the Masters: Drawings from Iran and India*

*Esin Attil*

6.12.80

The Brush of the Masters:  
Drawings from Iran and India




*Esin Atil*

The Brush of the Masters:  
Drawings from Iran and India

*Esin Atil*

THE FREER GALLERY OF ART

 *Smithsonian Institution, Washington, D.C., 1978*

Library of Congress Catalogue No. 78-70427  
Copyright © Freer Gallery of Art, 1978

Design/Chaparo Productions Limited  
Typesetting/Composition Systems Inc.  
Printing/Stephenson, Incorporated  
Production/Baker Johnson

## Contents

Foreword,	7
Drawings from Iran, 11	
<i>Jalairid, Timurid and Turkmen Schools,</i>	12
<i>Safavid Period,</i>	32
Drawings from India, 97	
<i>Mughal School,</i>	98
<i>Deccani School,</i>	126
<i>Rajput School,</i>	130
Notes,	143
Appendix,	147

73. Two Women with Attendants  
India, Mughal school, mid-18th  
century

Black line, gold and silver on  
paper; tinted with red, blue,  
green and white  
Page: 40.6 x 29.3 cm.  
(16 x 11 $\frac{1}{8}$  in.)  
Drawing: 23.2 x 17.8 cm.  
(9 $\frac{1}{4}$  x 7 in.)  
07.213

The drawing portrays two young  
ladies seated on a terrace overlook-  
ing a body of water beyond which  
is a strip of land with a large  
complex. The ladies are attend-  
ed by two servants who hold  
peacock-tail fans and are enter-  
tained by a quartet of musicians  
and singers who clap their hands.  
Joining their group are three  
other women and an attendant  
who is preparing potent and aro-  
matic concoctions from the con-  
tents of bottles and jars spread in  
front of her.

The drawing, pasted on blank  
paper, is enclosed by a gold-  
speckled red sheet and has a blue  
border decorated with gold floral  
motifs. The landscape elements  
are fully colored with green trees  
filling the background; the pond,  
barely visible behind the trees,  
was originally painted silver and  
now is oxidized. Certain features,  
such as the two fountains—one  
on the terrace where the ladies sit  
and the other behind them—are  
unfinished with only the outlines  
of the streams of water sketched  
in.

The two ladies sit on a carpet,  
leaning against large cushions;  
they are smoking water pipes  
while discussing the contents of a  
book. Placed on the carpet are  
other volumes; between the fig-  
ures is a group of cups and bowls  
on a mat which is barely  
sketched.

The setting most likely depicts  
one of the provincial Mughal  
courts with a large fortified palace  
and its suburbs represented on the  
shore beyond the water.

