

To Forwarded to  
to a 7.2 m. h. -  
fill sand -  
ditch (shady)  
February 1967

A REPORT ON THE ARCHAEOLOGY  
OF THE LOCSIN-UNIVERSITY OF SAN CARLOS EXCAVATIONS  
IN PILA, LAGUNA

(September 4, 1967 - March 18, 1968)



by Rosa C. P. Tzaris

With an Introduction by Leonardo A. ...

To Fernando - who started  
us on the road to \_\_\_\_\_  
with much hospitality.  
Linda & Judy  
February - 1968

A REPORT ON THE ARCHAEOLOGY  
OF THE LOCSIN-UNIVERSITY OF SAN CARLOS EXCAVATIONS  
IN PILA, LAGUNA

(September 4, 1967 - March 19, 1968)



By Rosa C. P. Tenazas

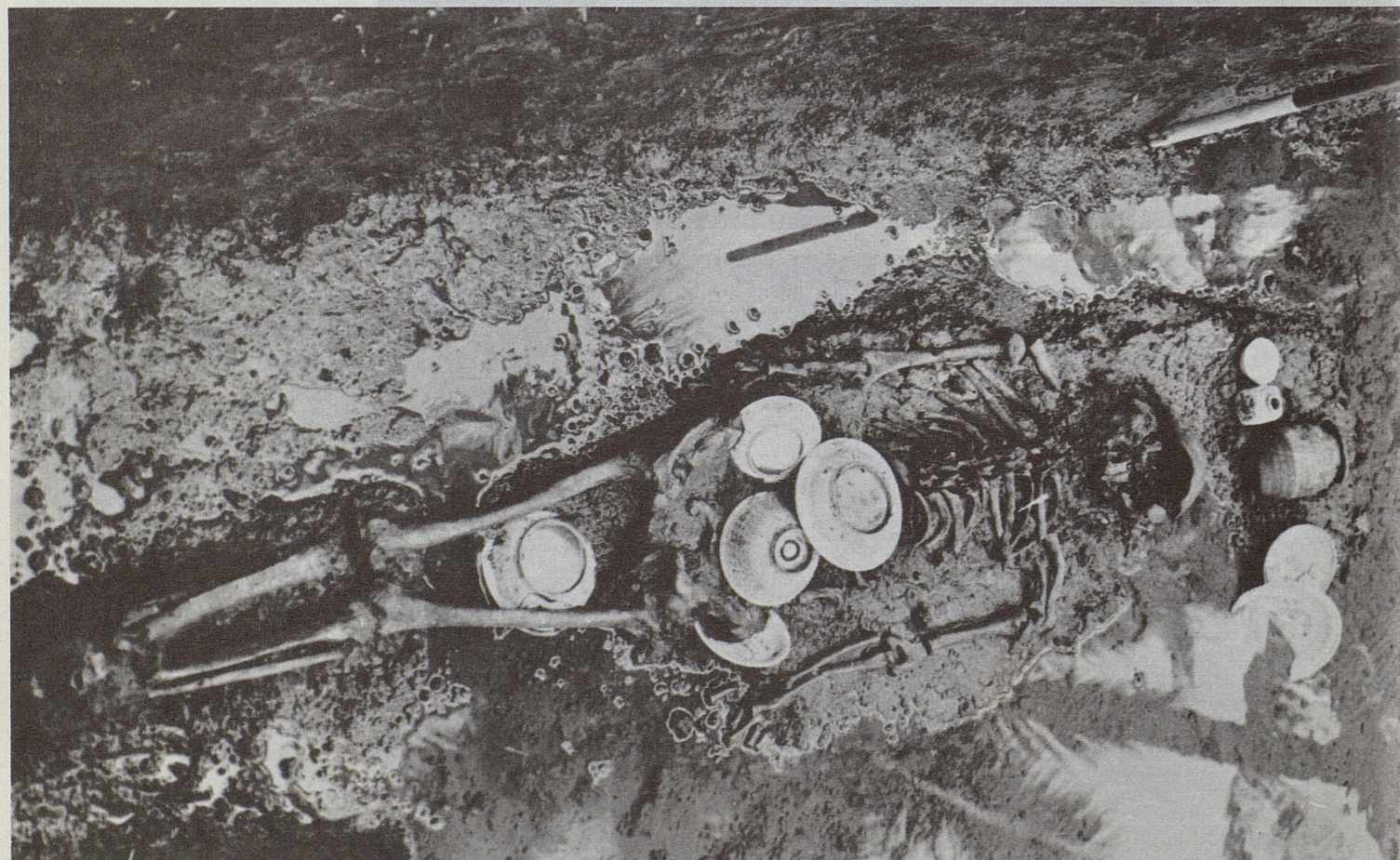
With an Introduction By Leandro and Cecilia Locsin

**Plate 16**

Burial # 28 in square H8. The associations include a *ch'ing pai* double-gourd teapot or pouring vessel with underglaze red spots. Lower Sung level or Period II.

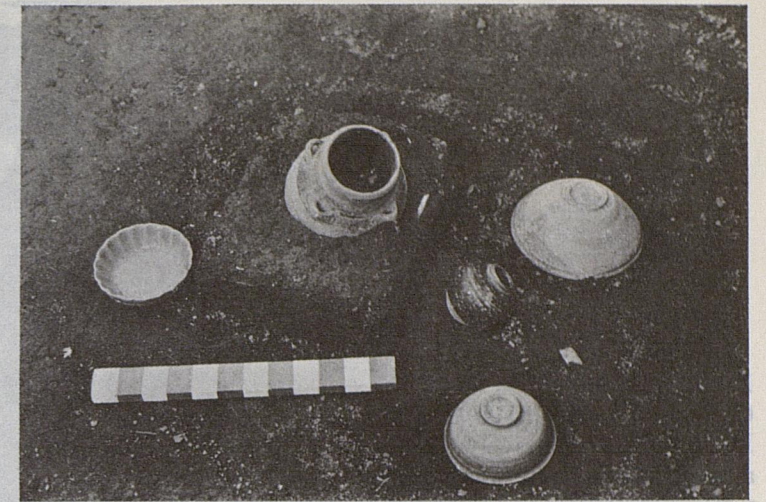
**Plate 17**

Burial # 34 in square G4. Early Ming intrusive burial. Period IV.



**Plate 18**

Cremation burial # 74 in a vessel with associated grave goods in square H10, Site I: Pinagbayanan/Agra. Period III.



**Plate 19**

Cremation burial # 62 in a pit with associated grave goods in square H8, Site I: Pinagbayanan/Agra. Period III.



**Plate 20**

Cremation burials # 93, 163 and 164 in square 17, Site I: Pinagbayanan/Agra. Burial # 93 is in a tall ovaloid brown jar. Burials # 163 and 164 are cremation burials in big broken stoneware jars. Period III.



**Plate 21**

Cremation burials # 42 and 161 in square D14, Site I: Pinagbayanan/Agra. Burial # 42 is cremation burial directly in a pit while burial # 161 is cremation burial in a big broken jar. Period III.